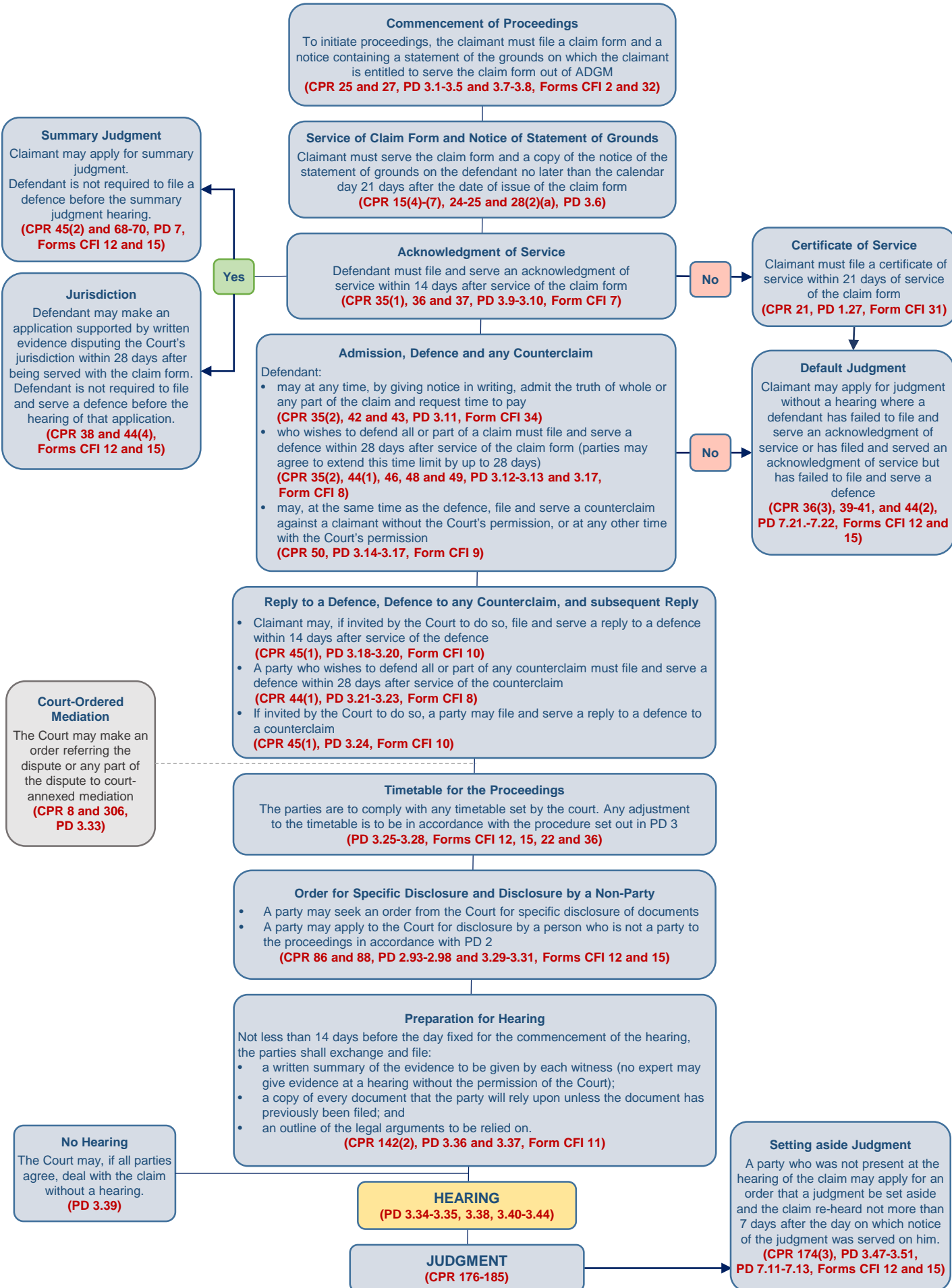


ADGM Court of First Instance – Small Claims Division* Procedural Flow Chart – Claim form served out of ADGM**



*A "small claim" is a claim or dispute for US\$100,000 or less except for employment claims, all of which must be commenced in the Employment Division.

**The content of this Guide is for informational purposes only. ADGM Courts are not providing legal advice by this information. Parties must always refer to the relevant Rule or Practice Direction.