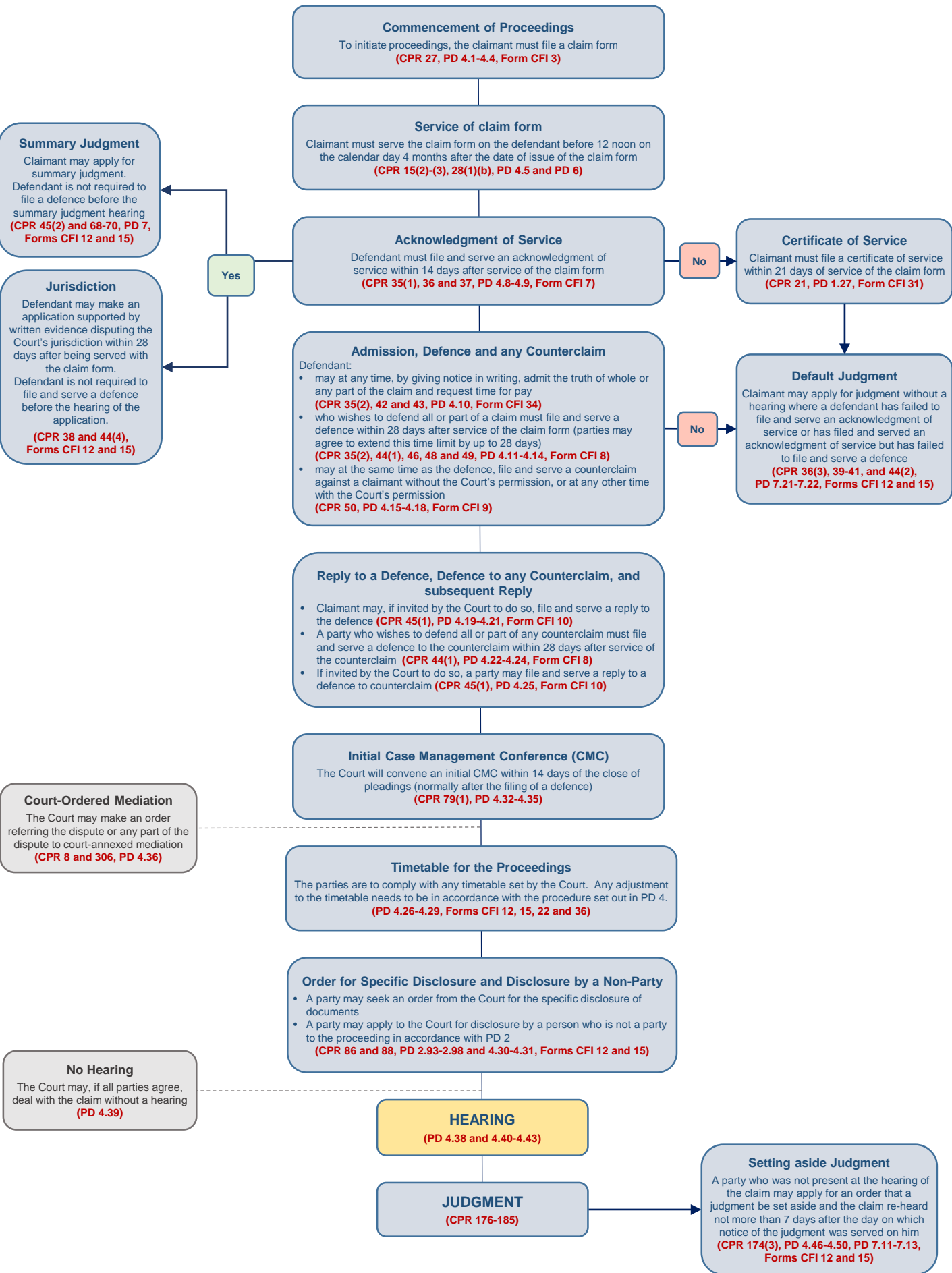


ADGM Court of First Instance – Employment Division* Procedural Flow Chart - Claim form served within ADGM**



*An "employment claim" is a claim or dispute brought pursuant to or in connection with ADGM Employment Regulations 2019 or any other employment matter.

**The content of this Guide is for informational purposes only. ADGM Courts are not providing legal advice by this information. Parties must always refer to the relevant Rule or Practice Direction.